

# THE YARDS

**GREEN** INFRASTRUCTURE AS **SOCIAL** INFRASTRUCTURE

LAMBDA ALPHA [JULY 2021]

# INTEGRATED DESIGN THINKING HAS THE POWER TO TRANSFORM.

Public health, climate change, urbanization, social and cultural shifts, natural resources have all taken on new facets requiring broader, more creative solutions. **As Urbanism + Planning we work within the AECOM platform to address today's challenges with next-level ideas.** We are intent on building legacies for generations to come, to design solutions that not only address current conditions, but also provide a platform for the future, capable of evolution because they have been developed through a whole-systems lens.



Washington Navy Yard, E. Sachse & Company, Baltimore, Maryland, Circa 1882



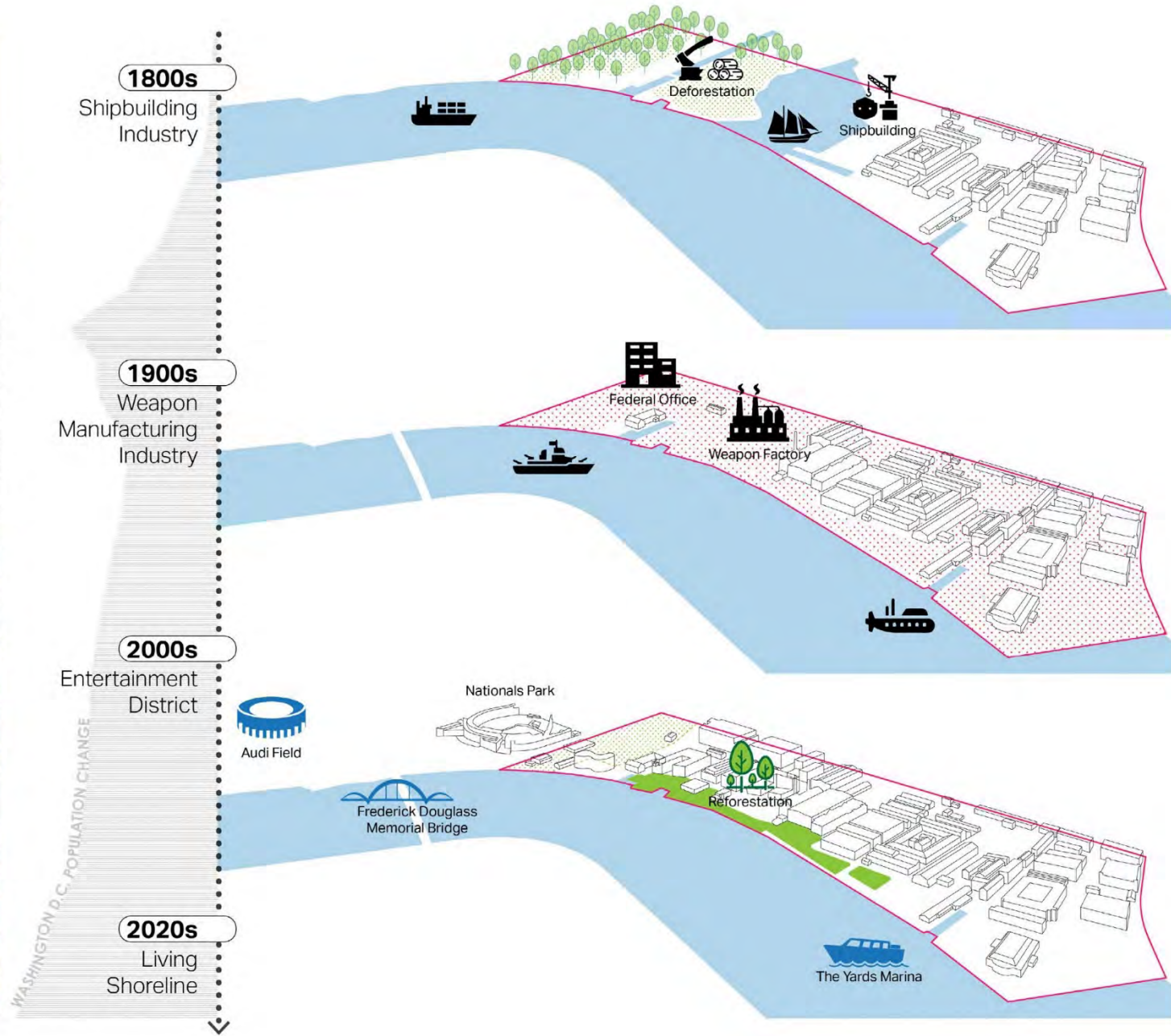
Washington Navy Yard (1918), Washington Navy Yard Naval Historical Center

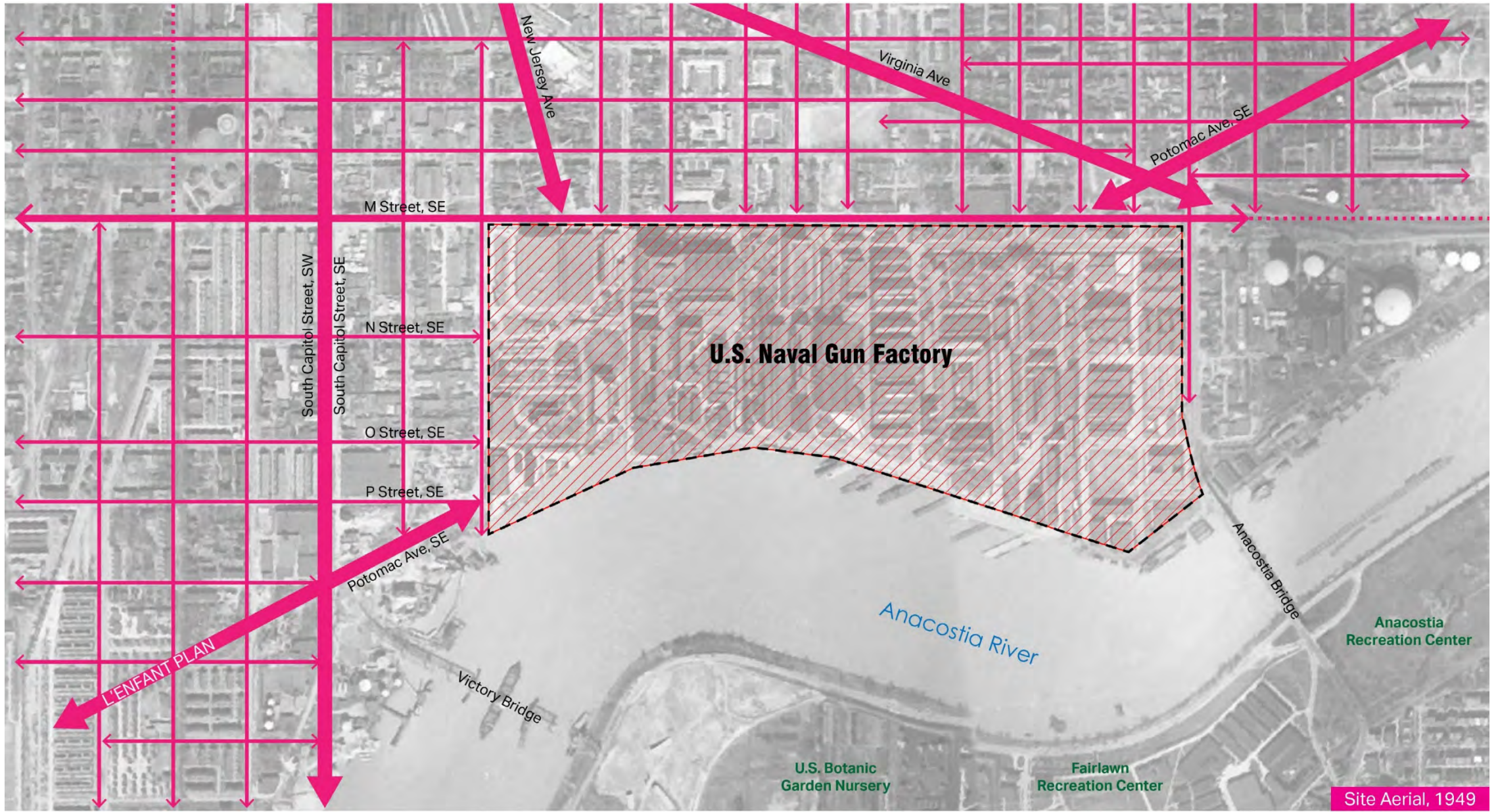


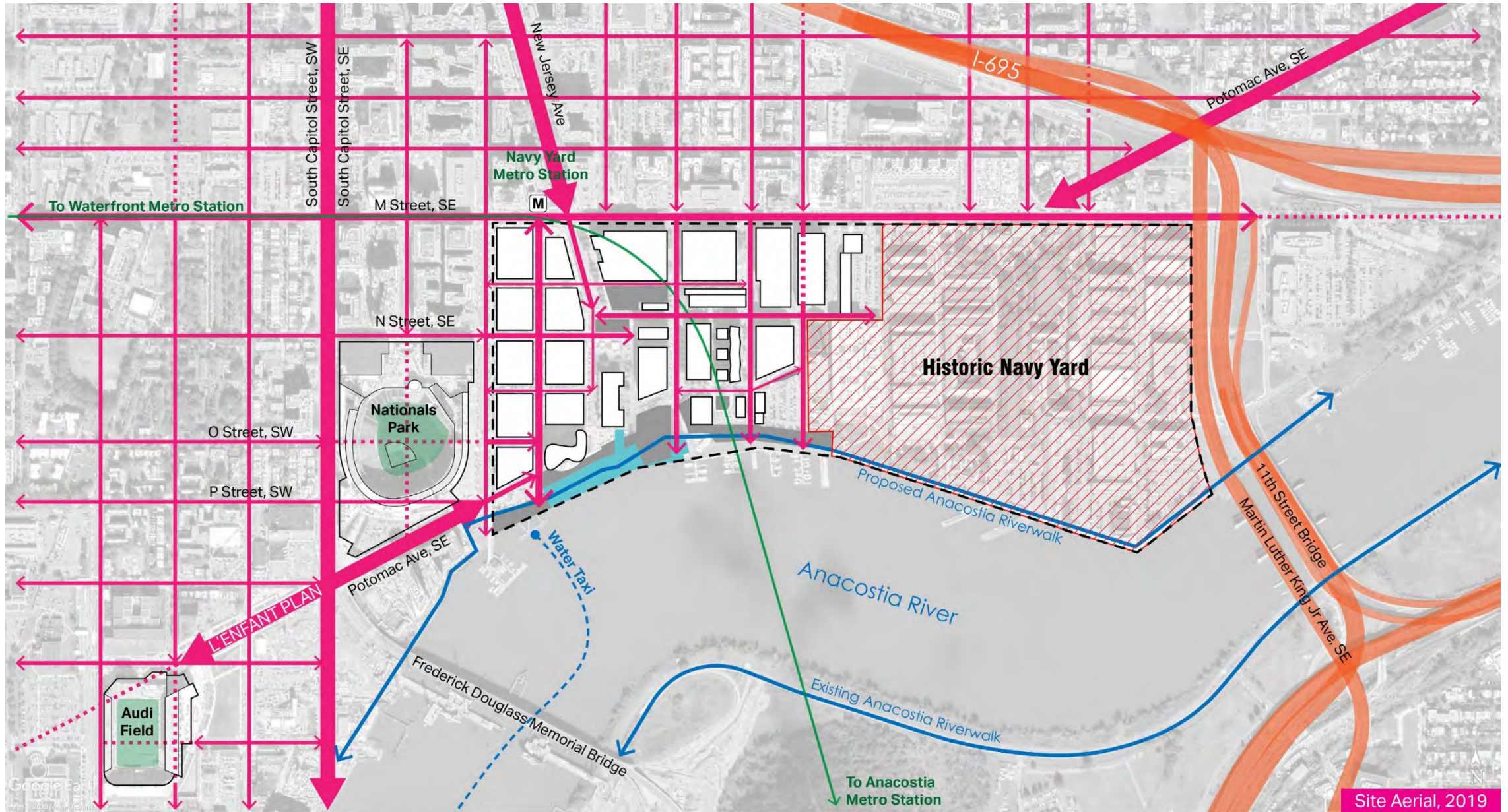
The Capitol Riverfront Business Improvement District, Image Courtesy of Interface Multimedia

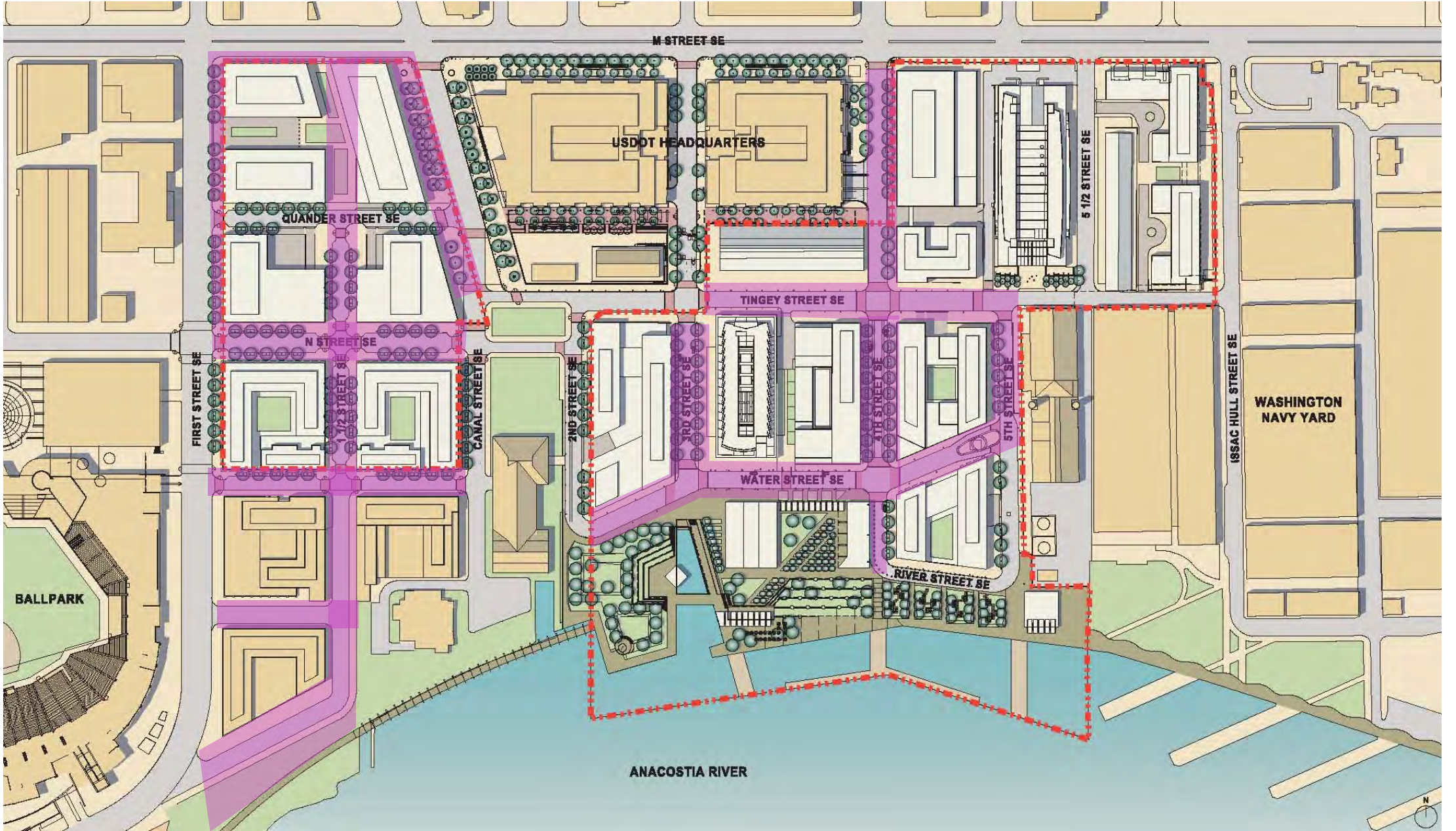


Washington, DC, Columbian Quarter, Redbrick LMD, LLC









The Yards Streetscape



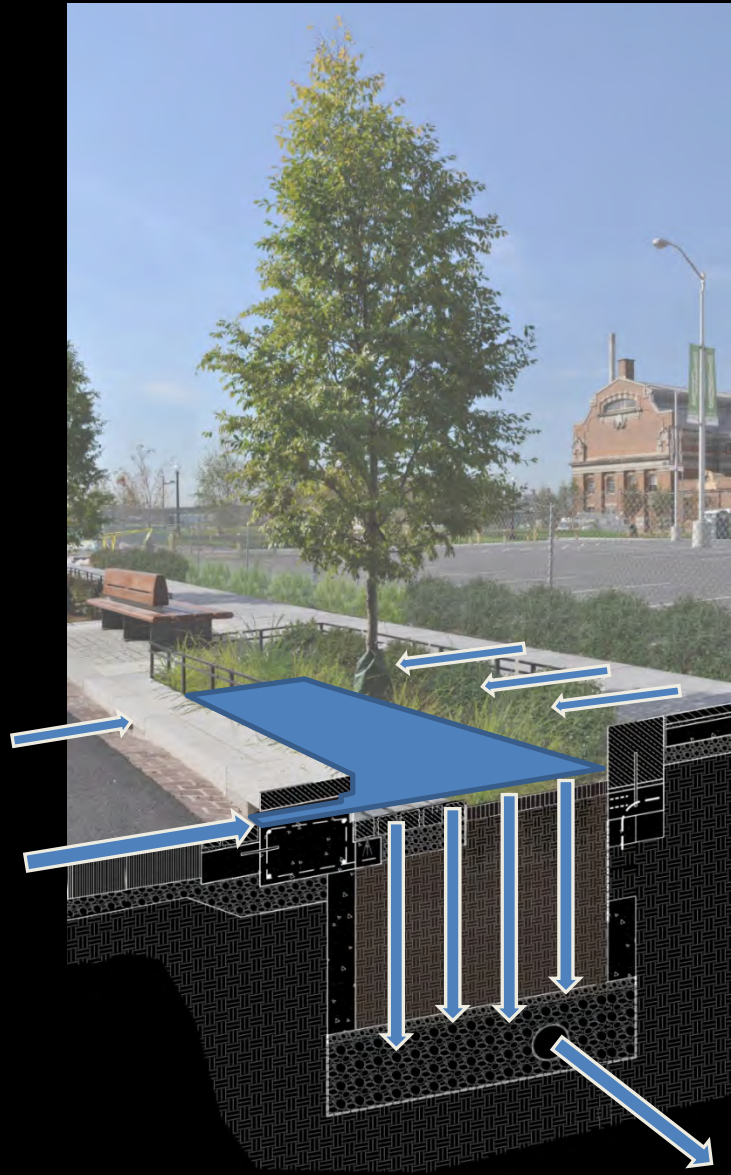


Curb inlet

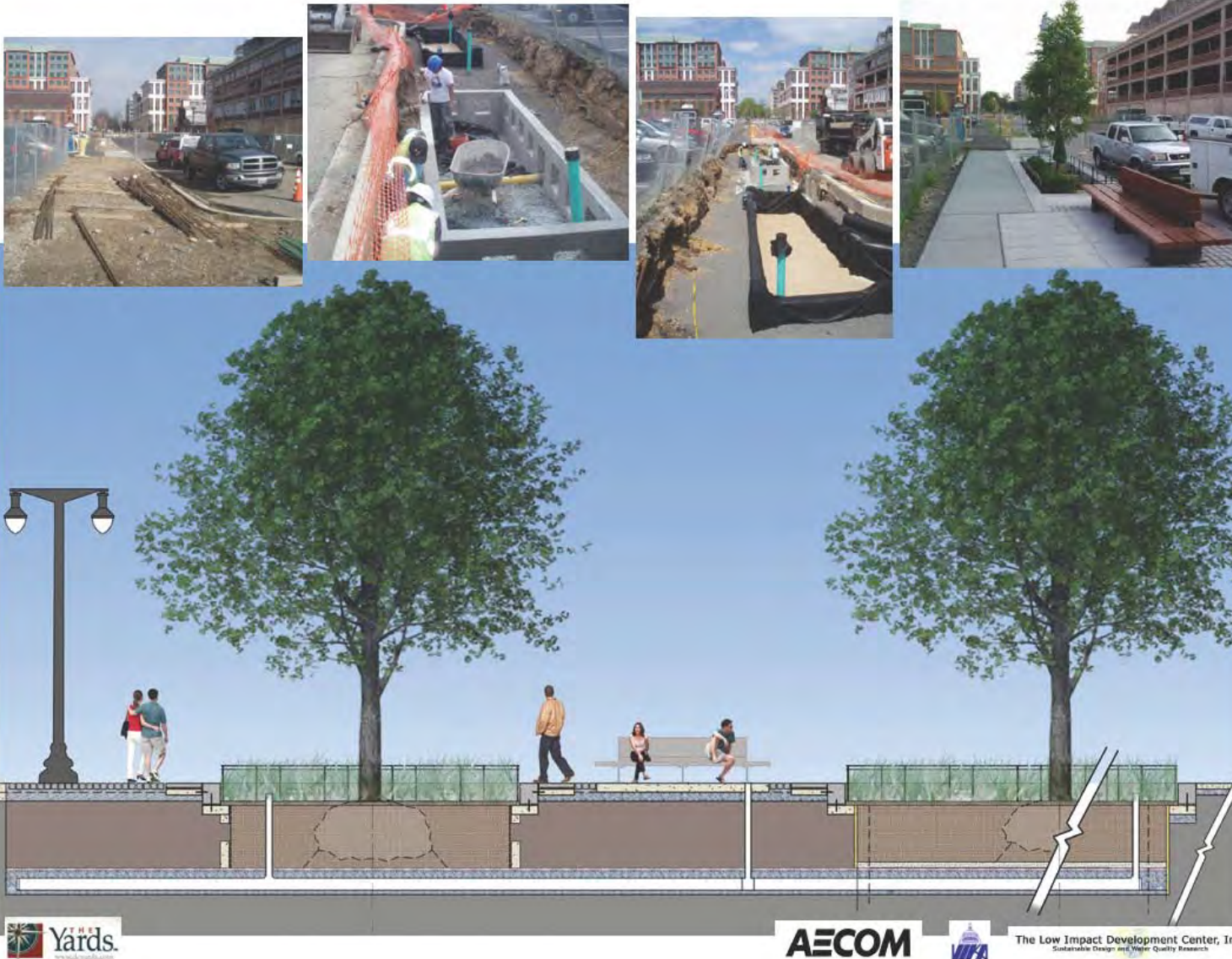
Filter soil media

Under drain

Crushed stone



To storm drain



2010

2014

**DISTRICT OF COLUMBIA**  
**DEPARTMENT OF TRANSPORTATION**



**GREEN INFRASTRUCTURE**  
**STANDARDS**

2014



2012



2021



2021

To storm drain

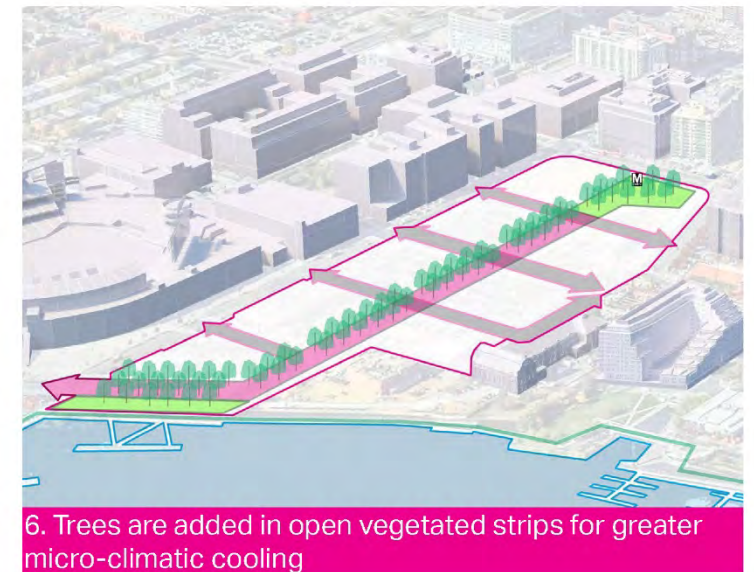
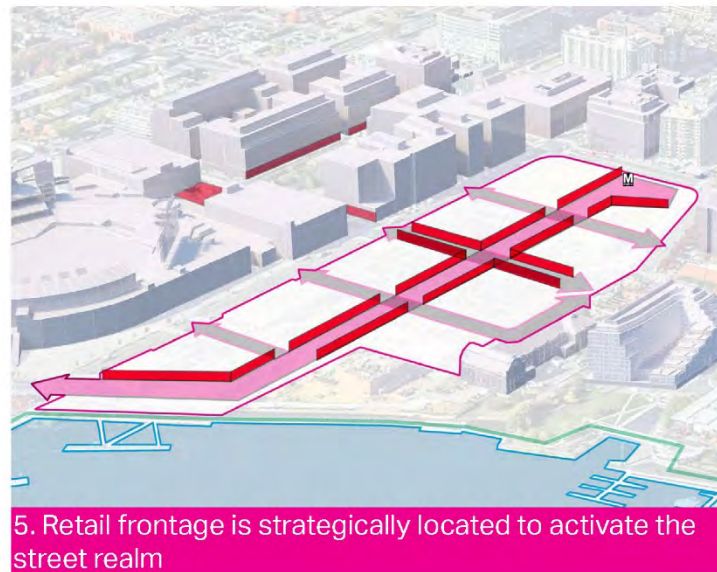
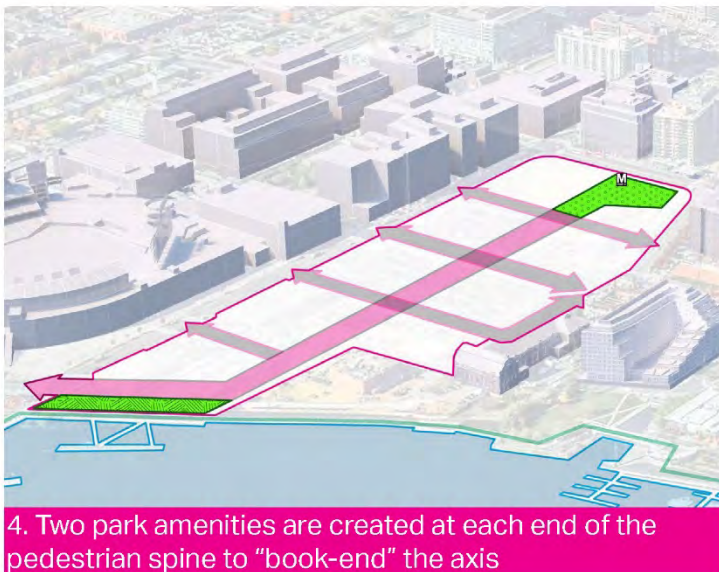
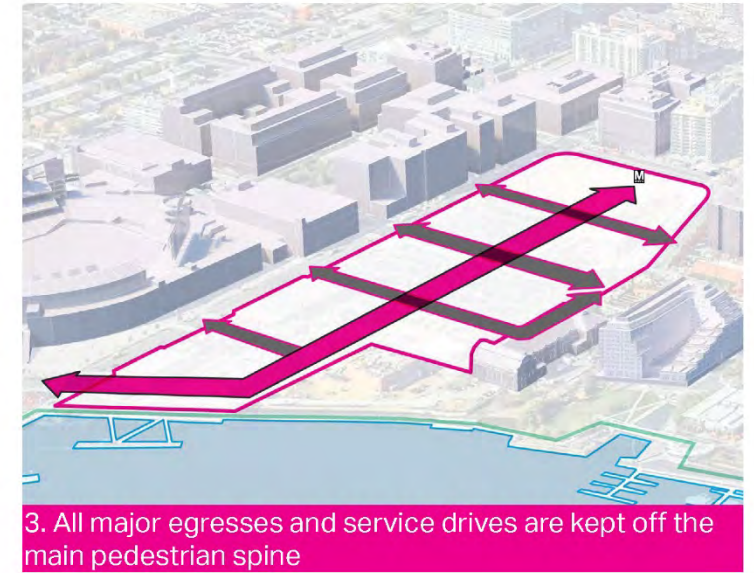
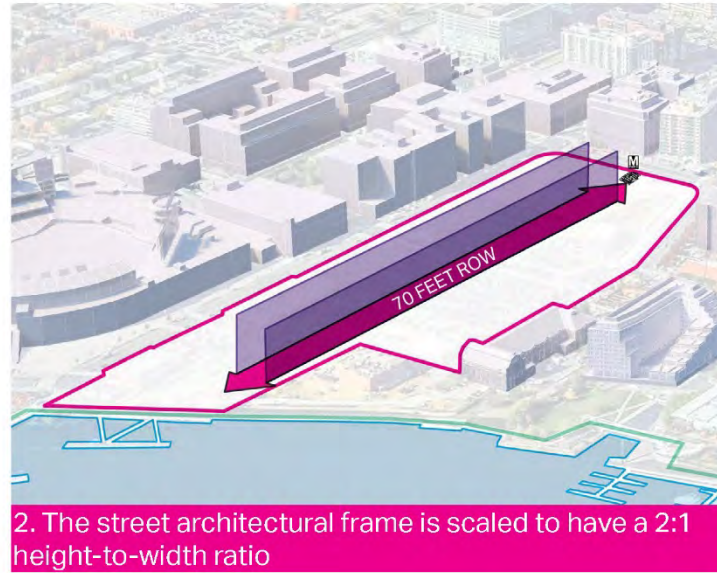
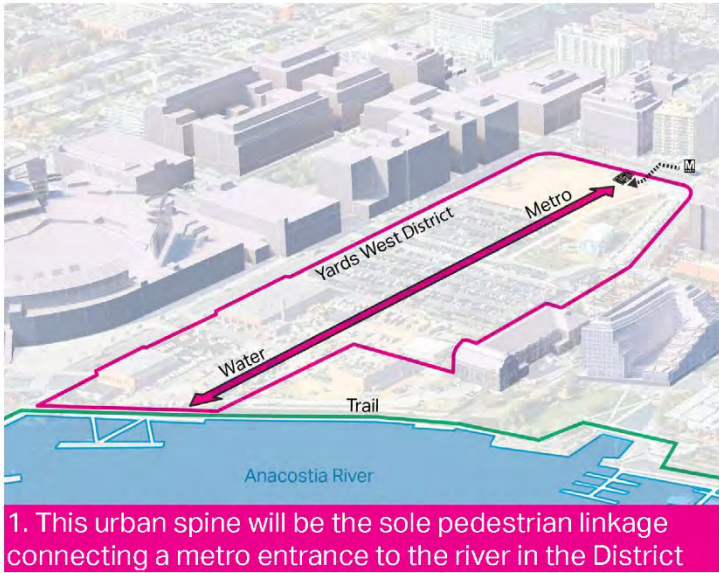


2015

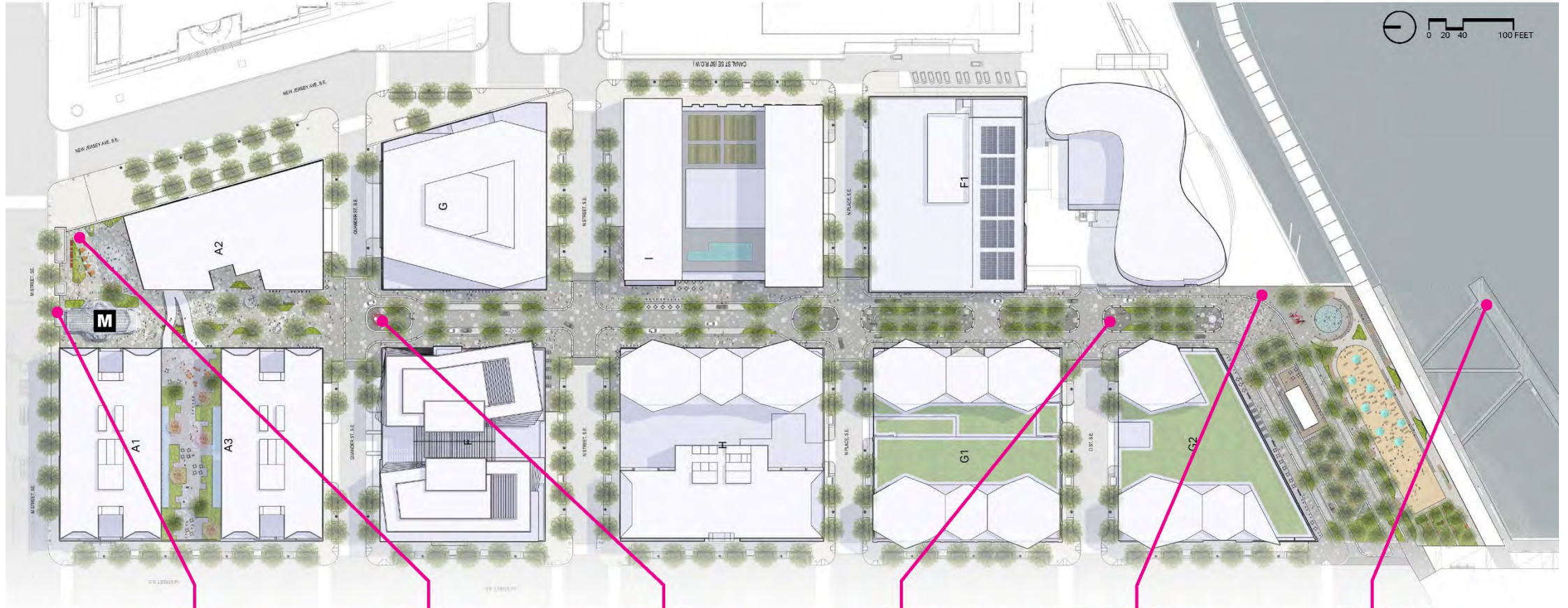
To storm drain



2021







North Perspective



Urban Park



Art Installation



Community Park

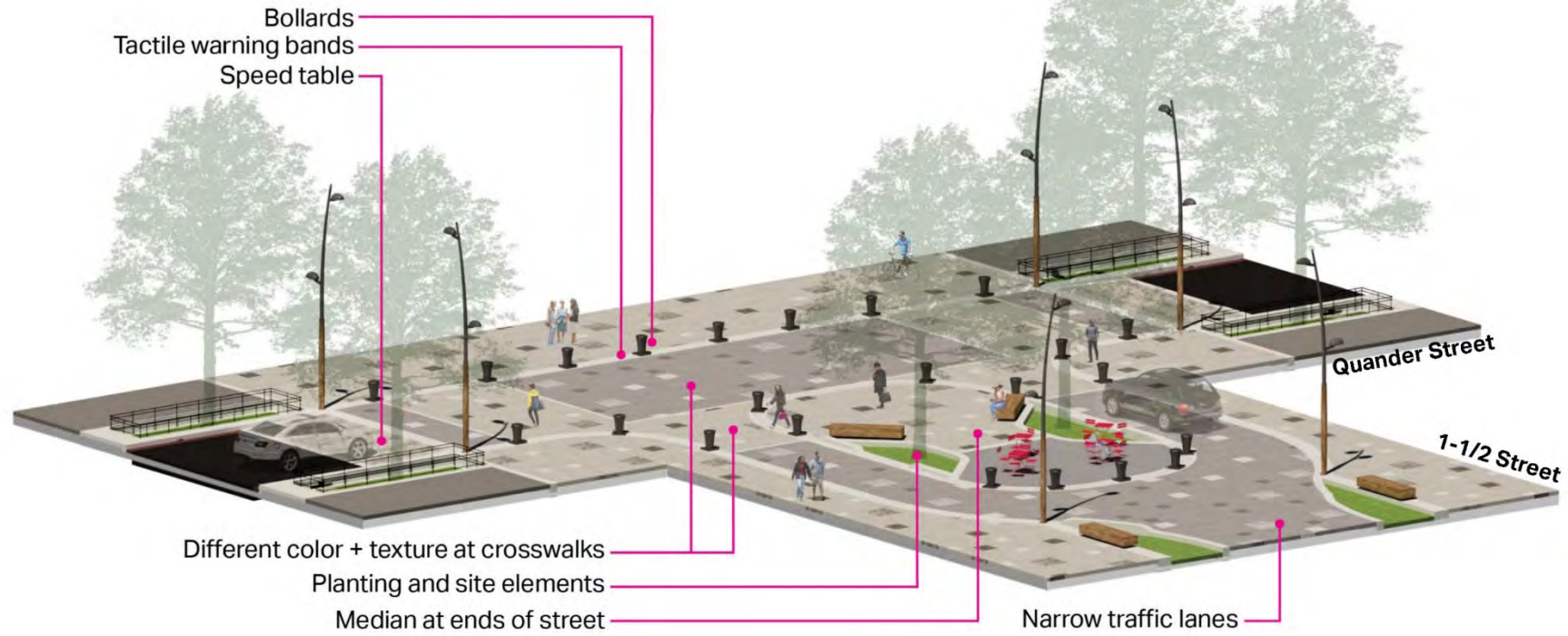


Riverfront Park



South Perspective





**Standard Street Design**



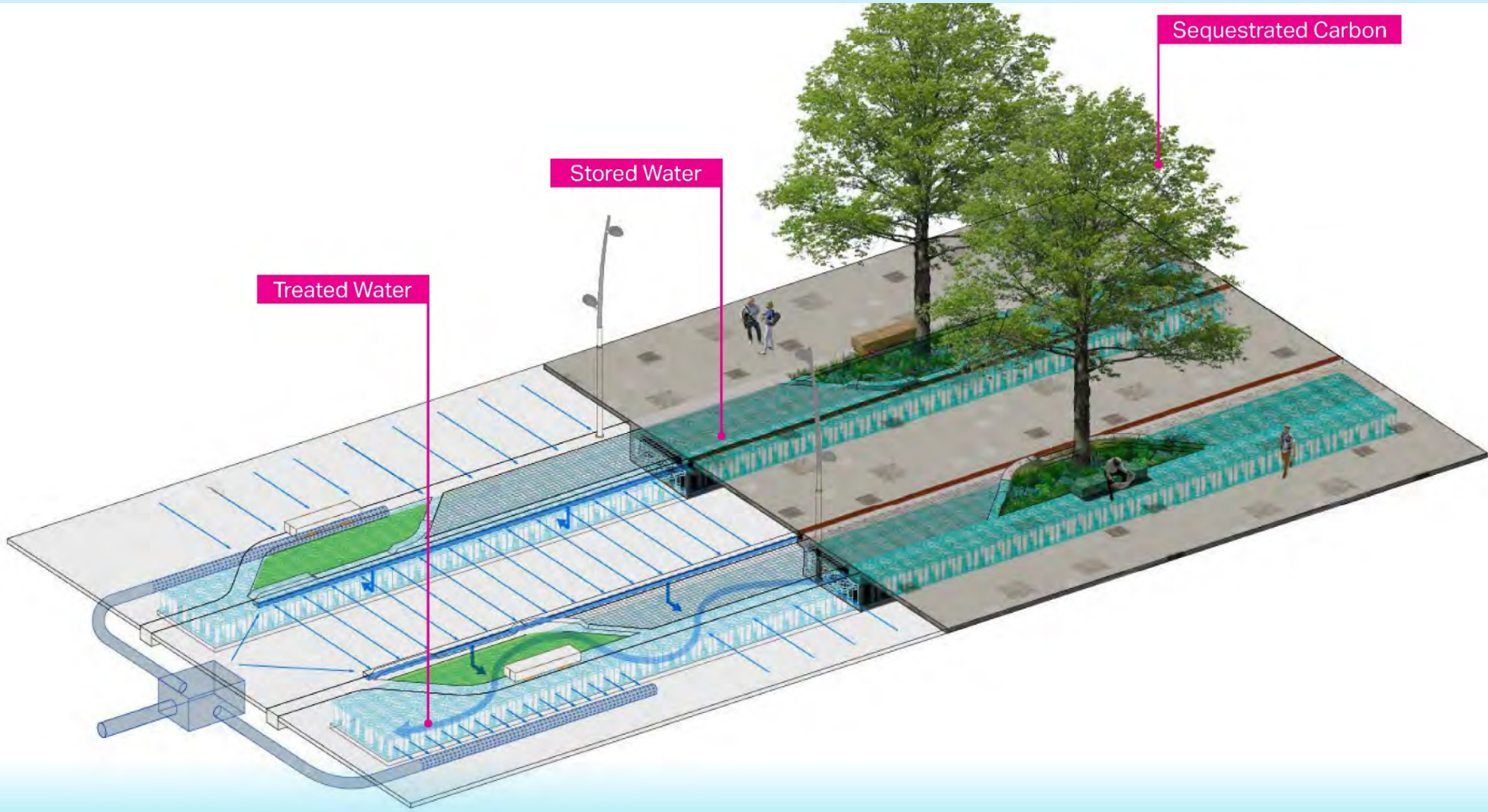
**"Shared" Street Design**





Yards Place

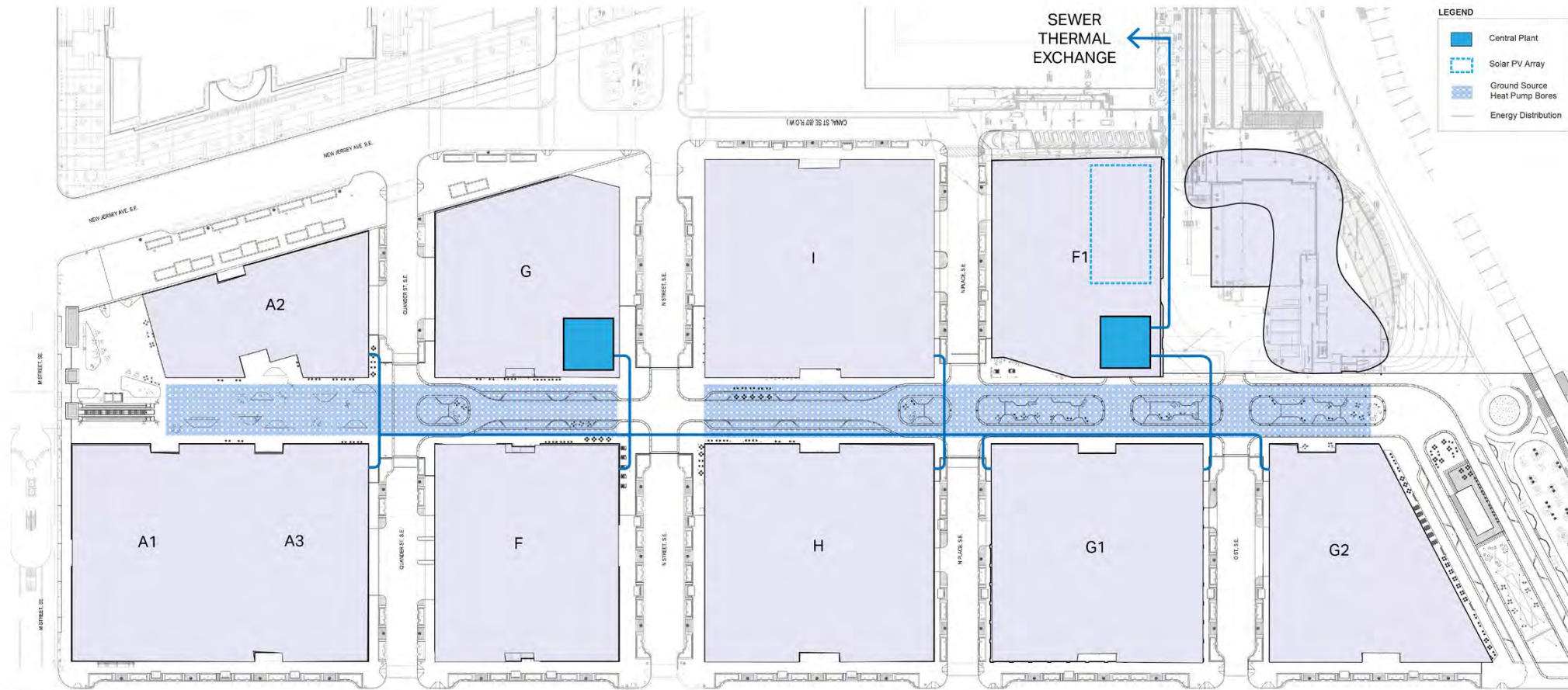
E/W streets



 **757,941** gal/yr  
TREATED WATER

 **23,088** lb/yr  
REDUCING CO<sub>2</sub>

 **1,052,464** gal/yr  
STORMWATER STORAGE



## GOALS

Reduce overall energy consumption

**5% - 50%** less energy consumed for heating and cooling than BAU

Generate energy onsite to offset public realm demand

Onsite PV powers public realm lighting and amenities

Reduce GHG emissions associated with energy system:

**+ 500,000 MTCO<sub>2</sub>** less emitted per year than BAU

Allow incremental implementation

**2 central plants** allow for independent phasing north and south of N street

Maximize leasable space and or amenity space

**10% - 40% less space occupied** by thermal energy infrastructure than BAU

**+/- 45,000 sf** saved in total including **+/- 11,000 sf** roof space

\*PLANNED BUT NOT IMPLEMENTED



The Yards Streetscape



**Brookfield**  
Properties

---



# Thank you

[ryan.bouma@aecom.com](mailto:ryan.bouma@aecom.com)

**AECOM**